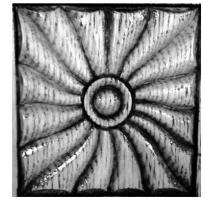


MURRAY COUNTY HISTORICAL SOCIETY NEWSLETTER



Murray County
Historical Society

January 2015

What's a **SWOT**?

During the fall our staff, with the help and guidance of the Historical Society Board and the End O Line advisory committee, have been working very hard to create a strategic plan to present to the County Commissioners for comment and approval. The EOL advisory committee help Joshua put together a strong mission statement for the park and the County Commissioners and Historical Society Board signed a management agreement. Both of those will help in producing a long term plan.

This plan is something new for both the County and the Historical Society in that it must address the county museums as a whole and include End O Line as well as the museum and the Dinehart Holt House. To accomplish this we started out with what is called a **SWOT** analysis. We considered the **S**trengths, **W**eaknesses, **O**pportunities, and **T**hreats or challenges for our museums, making a list of those. From that we created objectives and strategies to use our strengths and opportunities to overcome weaknesses and address the challenges. This process is not finished and we ask the members to add their ideas to help create a strong future for the museums.

Included in this newsletter is a **SWOT** grid for you to add opinions, ideas, and comments on. Please take the time to help us with this process. The more input we have the more complete and accurate our plan will be to guide us in the next three years. As a set of museums we have the responsibility to collect, preserve, and interpret the tangible and narrative history of our county. To do that we need your help. We have so much to build on thanks to the staff and board members who came before us. We feel a great responsibility to them and the county as a whole to proceed in a way that is inclusive and comprehensive.



In This Issue

- Strategic Planning
- Grants
- Baseball in Murray County
- New in the Collections
- Winter and spring events
- Mystery Photo

Mike Mason and helpers replacing the newly restored windows in the Dinehart Holt House.



SWOT ANALYSIS

	Strengths 1. 2. 3. 4.	Weaknesses 1. 2. 3. 4.
Opportunities 1. 2. 3. 4.	Opportunity-Strength strategies <i>Use strengths to take advantage of opportunities</i> 1. 2.	Opportunity-Weakness strategies <i>Overcome weaknesses by taking advantage of opportunities</i> 1. 2.
Threats 1. 2. 3. 4.	Threat-Strength strategies <i>Use strengths to avoid threats</i> 1. 2.	Threat-Weakness Strategies <i>Minimize weaknesses and avoid threats</i> 1. 2.



Please add any ideas or comments here: Let us know what kind of exhibits, programming, or collections you would like to see the three museums focus their time and attention on.

Please return to Murray County Museum, Attn: Janet Timmerman

FOCUS ON ACCESSIONS

The Murray County Historical Society has initiated a Collections Committee to serve as an advisory to the Museum Directors in adding new items to the historical collection. This Committee is composed of MCHS members, board members, and people from the community at large. They assess donated artifacts, documents and photographs for inclusion into the Museum's permanent collection. While we have specific guidelines, it is our intended goal to access into our collection items that will serve to enlighten our visitors on the history and activities of those who lived and worked in Murray County in times past.. The following two items were accessioned this year. The first was taken into the education collection where the items can be utilized as materials for our education programming. The second item was accessioned into our permanent collection and will be included in an upcoming exhibit on Baseball in Murray County.

ITEM #1: Teaching Materials, from Skandia Township and Fulda Schools from 1940 to 1945.



These materials include curriculum packets for country school teachers to utilize in their multi-grade classrooms.

Lola Christiansen taught in the one room, multi-grade school-house in Skandia Township, the materials were donated by her daughter Renita Goodrich. The collection provides insights into the methods of teaching and administration of rural schools in the 1940s. There are several different items including photos, lesson plans, student learning packets, correspondence from the County's Superintendent of Schools and tests then mandated by the State. We challenge anyone to successfully complete the 8th grade testing materials. They had a lot to learn! The blocks of materials include instructions and teaching methods on many common school subjects including math, reading, social studies and music.

Lola was a very interesting person; She graduated high school from Balaton, and then went to Mankato Teachers College

where she graduated in 1940. She then returned home and taught in the Skandia School from 1940 to 1941, She later taught in Fulda and Pipestone until 1948 when she married Robert Britton and moved to Janesville where she raised a family and continued to teach for another 30 years.

This donation is now in our educational collection at the Museum and part of it is being used to create the new Country School Program . A small book of original nursery rhymes paired with art projects from the materials will make up four programs which will start on Sat. January 24 from 10:15-11:15 AM. The rest of the programs will be Saturdays Feb. 14, Mar. 7 and March 28. Children in Pre-K through 2nd grade are welcome to attend.

Focus on Accessions continued..

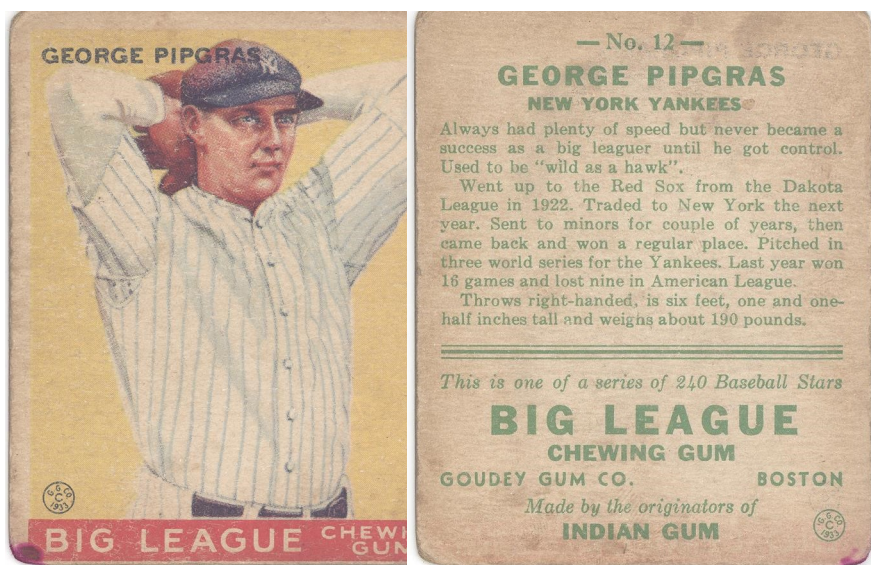
Hearing about the interest being generated in the area around baseball history, Trace Hafner donated this original 1933 George Pipgras Big League Baseball card. George played town ball in the county after being discharged from the Army after WWI. He honed his pitching skills for Woodstock, Lake Wilson, Hadley, and Fulda before a stint in the minor leagues. In 1923 he was accepted by the New York Yankees and played until an arm injury put him out of the game in 1933. He pitched with the now famous "Bronx Bombers" of 1927, 28 and 29. He is listed in the top 100 best Yankee players.

Artifacts such as this baseball card reflect Murray County's tie to regional and national history. It is the perfect example of what our collections committee looks for when deciding what the museum should accept into the permanent collection. There are three main criteria we look for. Does it help the Historical Society meet its

mission? Does it help us tell the story of Murray County? Are we financially able to care for this item in perpetuity?

When considering an artifact or document donation to the Murray County Museums keep these criteria in mind.

Please call ahead if you want to donate an item. We can help you with the decision before you bring it in. We no longer accept drop off items.



Other Accessions for 2014

From Murray County Memorial Hospital

Mercury collector

Hot water bottle

Doctors head lamp all circa 1970s

Table cloth circa 1920s

Uniforms from Dovary baseball team , 1940's

Dovary baseball hat both circa 1940s

Pie plates circa 1890s(Possible Dinehart)

Pamphlet, After College, What for Girls, circa 1880s

Service records from Currie, circa WW1 and WW2

Papers and Photos, The Dalquist family in Sweden and America, circa 1850 to 1962

A group of photos from the Christiansen family, circa 1910s onward

Group Photo, Dovary Twp, Des Moines River Twp, Westbrook Circa 1941

Group Photo, Pike and Pancake Days, Des Moines River Twp, Holly Twp., and Dovary Circa 1940

Family photo Ester and John Vander Lith, circa 1955

Register of Elementary Schools, circa 1935-1940

2 Books from Bob Artly Book of Chores, Issues and Close-ups, circa 1970s

6 books of Farm records from Emil Christenson, circa 1947-1952

1st grade math book, District 111, Murray County, teacher Irene Hovde, circa 1943

Framed photo, Christenson family children, circa 1910

New Accessions continued...

Wedding photo, Ester and Hilmar Christenson, circa 1932
Bakelite hand mirror, circa 1920s
Silver oil lamp, undetermined date
Slayton sports team photos, circa 1950s to 1960s
Persina Razor blades adverting board, circa 1940s
Photos and newspaper articles Golden Glove champions, circa 1957
Murray County Platt book, circa 1943
Framed photos of baseball players from Iona, circa 1949-1950
Files and reports from Murray County Baseball, circa 1940s
Slayton pupil report book, circa 1899
Photo, Teacher and Offices Union Sunday school circa 1885
Slayton HS yearbook, circa 1925
Setterberg family class reunion program, circa 1963
Lake Wilson Goodwill Club scrapbook, circa 1970s and before
Avoca city plat map, undated, believed 1900 or before
Murray County school clerk record books (5), Districts 31, 34, 80 and 84) circa 1891 to 1952
Fulda School district records, circa 1925
School clerks records, (6 books) districts 31, 36 and 98, circa 1884 to 1907
Teaching Materials, Photos and Reports for District 20, Skandia Township and Fulda Schools from 1940 to 1945.

Upcoming Activities

Sat. Jan. 17, 10-1 PM: Interactive Children's Booth for Family Day at the High School Gymnasium

Saturday Jan. 24, 10:15-11:15 AM: Country School: Nursery Rhyme 1 and Art Project: Pre-K-2nd grade. At the Museum.

Thursday, Feb. 5, 12-1 PM: Dinehart Lunchbox Lecture: The Language of Flowers with Gaylene Chapman and VIP Floral

Tues.-Fri. Feb. 10-13: Make and Take your own pop-up Valentine anytime that week, 10-5 PM.

Sat. Feb. 14, 10:15-11:15 AM: Country School: Nursery Rhyme 2 and Art Project: Pre-K-2nd grade.

Thurs. March 5, 12-1 PM: Dinehart Lunchbox Lecture: Town Ball Memories with Bill Bolin

Sat. March 7, 10:15-11:15 AM: Country School Nursery Rhyme 3 and Art Project: Pre-K-2nd Grade

Sat. March 28, 10:15-11:15 AM: Country School Nursery Rhyme 4 and Art Project: Pre K-2nd grade.

Thurs. April 2, 12-1 PM: Dinehart Lunchbox Lecture: 75th Anniversary of the Nation's Worst Car Crash with Janet Timmerman.

Town Team Baseball **by Bill Bolin**

This past summer Marty Krogman, originally from Lismore and now a resident of Shoreview, MN approached me about preserving the rich legacy of documents, stories and artifacts of town ball in South-west Minnesota. While I haven't checked out baseball exhibits at the museums in the other eight counties of this area (Rock, Nobles, Jackson, Pipestone, Cottonwood, Lincoln, Lyon and Redwood), I have played or watched ball games in most towns in every one of the counties listed.

Marty's research on the First Night League indicated a huge interest in town ball, but only recent interest in preserving what might be left. Recently in Willmar the Kandiyohi County Historical Society began a move in that direction developing a West Central Minnesota Baseball Hall of Fame. Likewise the Minnesota Historical Society has also jumped on the bandwagon of acquiring articles of the Twins as well as the Minneapolis Millers and Saint Paul Saints. The senior curator of the MHS said, "Sports memorabilia is very collectible, also it is very expensive and time consuming to acquire."

Murray County in my time fielded eleven teams: Iona, Hadley, Slayton, Fulda, Dovray, Currie, Lake Wilson, Chandler, Chandler Air Base plus VFW teams in Slayton and Fulda. The players, games, huge fan base, and special memories are worth preserving. At one time even townships fielded teams and baseball was exceptionally popular before the 1920's. The county museum displays the Murray County Championship belt won by Iona in 1887. It was donated by Joe Dish of Iona. Some of the earliest town ball was recorded in 1883, before some towns became incorporated.

A baseball archive could be made up of scorebooks, pictures, articles, etc. and filed according to each town team. Possibly baseball pictures and articles could go on line. Most important the Murray County Museum could offer an opportunity for town ball research and writing. I recall seeing games at Valhalla, Tepeeotah, Iona (when the diamond faced N – NW), Hadley (when the ball diamond was south of Summit Lake just off Highway 30, and Slayton, when the ball diamond was just east of the present hospital.

In some areas town ball is still alive and well. The Hadley Buttermakers have fielded excellent teams for years and up in Redwood County, tiny Milroy has two teams (Yankees and Irish) and two lighted fields. Milroy has well documented their baseball history and we should provide the opportunity for Hadley to do the same.

We would like to collect baseball items from throughout the county. Marty and I, and others with significant collections, have already considered placing our things in the museum, as others from throughout the county have done. Over time much material has already disappeared but there is still a lot out there. The Krogman's, Marty and his wife Mary Kay, have made a large financial commitment to this project. Why? Marty's relatives, Rusty and Vin Fehring, once played in Murray County. At one time they faced each other, both pitching, one for Iona and the other Hadley. The county has a rich baseball heritage. Between 1945 and 1952 Iona, Hadley and twice Fulda appeared in the Minnesota State Baseball Tournament. In 1949 Slayton and Iona were charter members of the historic First Night League with Marshall, Pipestone, Worthington and Wilmont. In 1950 Fulda installed lights and joined the league. Baseball, like water, crosses county borders and though the museum collects only county items, a comprehensive list of the region's resources and where they can be located could be held at the museum.

If you have baseball items, documents or stories you would be willing to donate, or would like to financially help with creating a baseball archive please contact Janet Timmerman at the Murray County Museum to find out how you can help.

Think of the great town ball players and teams, past and present and how vital it is to act quickly. I'm hopeful the entire county will support this idea. It will take a lot of effort and we'll have to get to work.

Grants New and Completed

In 2014 the Schmidt foundation grant to restore and recreate the original stained glass windows in the Dinehart Holt House was completed.

Five windows were restored to their previous beauty and two more were completely reproduced from historic photos with the colors being matched to panes that were in the parlor. The grant for five thousand dollars was utilized with the Historical Society providing the additional funding for completion of the work.

A \$6600.00 grant was received from the Minnesota Historical Society with funds provided by the Arts and Cultural Heritage Fund. This grant will fund a comprehensive Collections Assessment for the Museum. In March the Midwest Art Conservation Center will spend two days assessing our collection of artifacts and will provide the county with a written long term plan for preservation of our collection.

The Photograph Inventory Project is making progress with several hundred photos cataloged.



Hours:

T-F 10-5 and S 1-5 PM

Contact Us

Give us a call for more information about programming, visiting the museums, or renting the Dinehart-Holt House for special occasions .

507-836-6533

museum@co.murray.mn.us

www.murraycountyhistoricalsociety.org

Find us on facebook.com
[murraycountyhistoricalmuseum](https://www.facebook.com/murraycountyhistoricalmuseum)

PLACE
STAMP
HERE

Murray County Historical Society
PO Box 61
Slayton, MN
56172