

# MURRAY COUNTY HISTORICAL SOCIETY NEWSLETTER



MURRAY COUNTY  
— HISTORICAL SOCIETY —

Summer 2019

*"Falsehood flies, and the Truth comes limping after it."*

*Jonathon Swift, 1710*

I guess times haven't changed much since Swift's era. What has changed is the way and the amount of falsehoods we are exposed to. Today's terms like 'fake news' and 'alternative facts' abound. Seems the term "fake news" is used when describing news you just don't agree with. When we all look at the "news" that comes across our screens it is hard to determine what is news, what is opinion, and what is just downright lies. So here, in a nut shell, thanks to the Harvard summer school webpage, are ways you can use **historical research techniques** to decide whether that crazy share you got on Facebook is real or not.

1. Remember, according to Facebook's Community Standards Enforcement report, it disabled 2.2 **billion** fake accounts between January and March of this year. There's a lot of junk being passed around.
2. Vet the publisher's credibility. Would it meet academic citation standards?
3. Look at the quality of the writing. Be suspicious of misspellings, over use of punctuation or ALL CAPS.
4. Consider the source or lack of contributing sources. Most good journalism uses quotes and fact based sources.

If it is a photo and there is no source listed, remember amazing things can be done to create fake videos and photos.

5. Check it with a fact checking site like Snopes.com or FactCheck.org.
6. Check the date of the story. Some stories are reposted to support a new set of circumstances or events.
7. Check your own biases on the issue. Do your own beliefs affect your judgement whether to re-post or to let misinformation die? Consider whether you only get news from sources whom you agree with or listen to a number of differing sites.

To see how biased your news sources are go to: [www.marketwatch.com](http://www.marketwatch.com)  
or : [www.allsides.com](http://www.allsides.com)

I think the best strategy is to keep a good healthy sense of skepticism and educate yourself through reliable sources. Critical thinking skills are key. False stories easily become propaganda. History has proven that over and over again. Let's not let the truth limp in. *Janet Timmerman*

## In This Issue

- Bring back the Bears!
- News from the Staff
- Upcoming Events
- Donors and Donations
- Legacy Grants
- Fundraisers!

# Many Thanks for Donations and Memorial Gifts

## Donations:

Bruce Reinart

Anonymous donation for the Summer fundraiser

Brian Harmsen-donation of cedar bench and planters for Summer Fundraiser

Twins Tickets for fundraiser– Hadley Steel

2020 Hadley Buttermaker Season Tickets– ButterMakers

Currie State Bank

State Bank of Chandler

MinnWest BankSouth-Slayton Office First National Bank

## Memorials:

**In Memory of Patricia Weber:** Michael and Janet Susa, Margaret Welter, Jenine and William Molohan, Garry and Jennifer Immerman, children of Roy and Maxine Pierson, Carol and William Schultz, Mark and Janet Timmerman, Kirsten Kirkowski and Kristen Sheehan, Perry and Wendy Fox, Gordon and Mary Tiedeman, Joe, Natalie, and Danny Weber, Vin and Cheryl

Weber and family, Olive Banning, Lawrence Sara Himes.

**In Memory of Janice Foster:** Mark and Janet Timmerman



## New Fundraising Effort to Return the Dinehart Bears

In 1893 Christopher Dinehart took his award winning wheat to the Chicago World's Fair. While there, he picked up a business card for a famous house of woodcarvers from Brienz, Switzerland. We believe the fruits of that card are the hand carved Black Forest bears that once graced the newel posts of the grand staircase. In 1996 the bears were sold out of the house. Last summer the owners of the bears approached us to see if the historical society would like to purchase them back for the original amount and restore the bears to their rightful place in the Dinehart Holt House. The MCHS board has decided to dedicate the Pat Weber Memorial gifts to begin a fundraising campaign to purchase the bears. The total cost of returning the bears will be \$10,000.

If you would like to help us bring the bears home send donations to the Murray County Historical Society and be sure to make note it is for the bears. We are excited about this possibility. Help us make it a reality!



## A Note from Rose



In the last newsletter, I began my update with saying how busy the winter was. I have come to find out that there is always something to keep us busy at the museum!

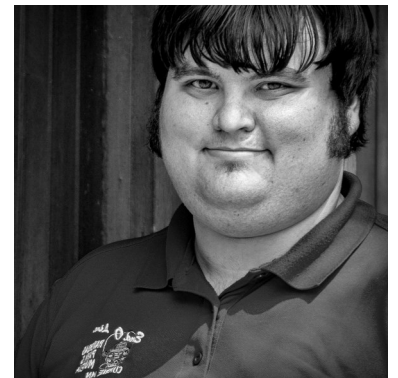
The building phase of the framed art storage project was completed a few months back. Then came the task of moving all the framed art from the Newspaper Room to the West Wing where the storage unit was installed. So far, there are 88 separate pieces of art, and other flat artifacts, that are being housed in the new unit with plenty of room for growth in the collection! While moving the art, each piece was catalogued into our collection management software, PastPerfect, which included updating the artifact's description, location, dimensions, and of course adding a photo.

After moving the framed art out of the Newspaper Room, it seemed like the right time to tackle organizing the room altogether. It took several days to organize the room by grouping like items together—scrapbooks, ledgers, plat books, rolled maps and blueprints, and miscellaneous documents. The next step in this project will be to move more of the ledgers out into the research area to make them more accessible. Now, with renovations to the County Court Building, we have been given several pieces of used furniture which will allow the Newspaper Room to become even more organized!

As for programming, Janet and I staffed a booth at the ECFE fair held on March 16 which took place in the MCC gym. Sticking with our "Recreation on the Lakes" theme we brought over the miniature *Miss Murray* boat so the children could try their hand at fishing and had a craft table set up where they could make their own colorful fish. The Lunch-box Lecture Series is wrapped up for the season and we are now looking forward to the upcoming Front Porch Music Series which will start the second to last Thursday in July.

Overall, working on the collection, programing, and daily tasks around the museum have kept me, you guessed it, busy. There is plenty to look forward to this summer with the Front Porch Music Series, an increase in genealogy re-

## End-O-Line Railroad Park and Museum Happenings by Site Coordinator Jakob Etrheim



It has been a super busy (and wet) spring and beginning of summer here at End-O-Line Park. In late March, during a site check we found the Des Moines River rising over its banks into the General Store and Grist Mill buildings. We immediately began removing artifacts from the buildings and raising display cases and furniture off the floor. About 100 artifacts were water soaked and a few damaged beyond restoration. Most of the artifacts from the two buildings are in short term storage on higher ground until we can assess appropriate prevention measures. Special thanks to Mark and Ian Timmerman, James Jens, as well as Rose and Janet for helping. Also thanks to the County Highway Department for clearing the parking lot of snow, making access easier. Along with this flooding, our church basement got about three feet of water in it after the power went out during the April 11<sup>th</sup> blizzard because the sump pumps weren't able to run. Like the Kelly Clarkson song: "what doesn't kill you makes you stronger!"

Once we got the park dried out and cleaned, May brought many field trips. By month's end, we welcomed over 640 students and teachers from eleven different schools to End-O-Line. On June 1, we hosted our annual open house event; highlighted by a presentation by acclaimed author of the Orphan Train movement, Renée Wendinger. We had over 100 people come to the park and about \$300 in free-will donations. Independence Day is our second free-will offering admission day. So we hope to see you on July 4!

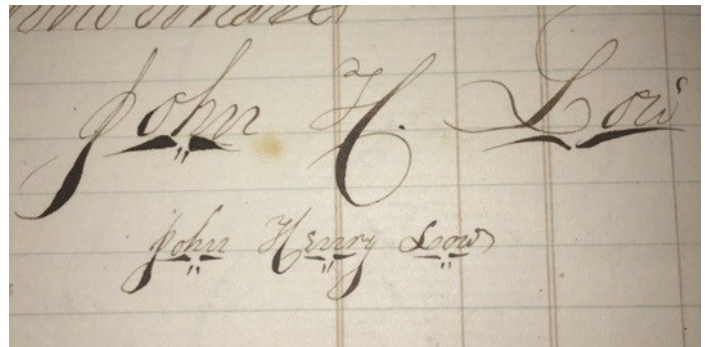
Other than that, things are trending on the up-and-up for End O Line as I write this article! A reminder that the park is open Wednesday-Sunday 10am-5pm until Labor Day or by pre-arranged appointment outside of those hours or after Labor Day. Whether the last time you visited was last year or forty years ago, you'll always learn or see something different. We hope to see you all sometime this summer!

# This Just In...

Every day we have folks call or stop in to see if they might donate family heirlooms and items. For every item taken in we probably turn away three or four. There are criteria for what we bring in to the collection. Was it created in the county? Was it used extensively by someone from the county? Will it help the museum meet its mission? Can the museum afford to give it the proper care and preservation? Here are a few select items to be reviewed by the MCHS Collections Committee.



MC Fair Director's ribbon from 1925. Donated by Chisago County Historical Soc.



1850's Journal belonging to John Henry Low prior to coming to Murray County. Also, the 1868 original abstract to their property at Bear Lake Woods. Donated by Melissa Stenerson, Pleasant Hill, CA.



1890's hand made women's dress jacket. Made by Josephine Low in her Slayton millenary shop. Donated by Melissa Stenerson, Pleasant Hill, CA.

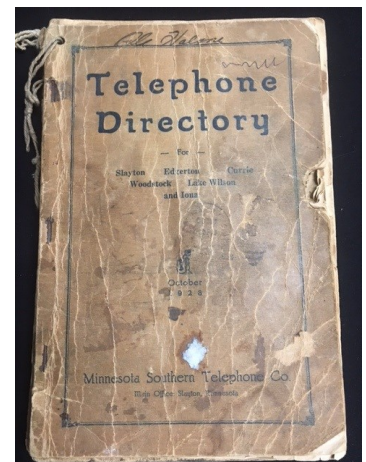


Childs brass trumpet received as a gift by 6yr old Randall Steffen in 1924. Donated by Wendy Steffen, Slayton.



Original photo of ice damage on Lake Shetek, circa 1960. Donated by Jim Keul of Tracy.

1928 Telephone Directory. Donated by Tim and Lavonne Youngren, Howard Lake, MN.





## **Summer Time and the Livin' is Easy**

### **5th Anniversary of the Front Porch Music Series**

Bring your lawn chairs and enjoy another season of great local talent performed from the Front Porch of the Dinehart Holt House. All concerts start at 7 PM.

Free and Open to the Public, but we do pass the hat!

#### **Thursday July 18– Starfire**

Well known Fulda group playing old time rock and roll and pop favorites

#### **Thursday, July 25– Maple Street**

Local favorites from Slayton playing country, rock, and original tunes

#### **Thursday, August 1– Jazz with Ross and Pete**

They performed for our first season back in 2015. Their name says it all.

**Please take time to Thank This Year's Sponsors!!!**

**Currie State Bank**

**Minnwest Bank-Slayton**

**First National Bank of Fulda and Slayton**

**Chandler State Bank**

#### **Thursday Aug 1– RootBear Tasting!**

**5-7 PM**

**"RootBear Tasting" Fundraiser!**

We're raising funds to bring the Dinehart Bears back,

Choose 4 kinds of RootBears to taste.

Then choose your favorite for a RootBear Float!

Cost 5\$ for a flyte and a float!

**Yabba Dabba Do!**



## Legacy Grant Funds Help Preserve Murray County National Register Places and More!

In the last six months the Murray County Museums have received three grants from the Minnesota Historical and Cultural Heritage Fund administered through the Minnesota Historical Society. These grants are made possible by the Legacy Amendment's Arts and Cultural Heritage Fund through a 2008 vote of the people. The grants are awarded to projects of enduring value for the cause of history and historic preservation across the state.

The grants the museums received will help assess the condition of the End O line Railroad Turntable, create a scope of work for the repair of the Dinehart Holt House (both on the National Register of Historic Places) and pay for a small museum management lending library which will be available to other museums and county citizens.

In 2017 and 2018 the Murray County Museum received a large grant to prepare a Historic Structure Report on the Dinehart-Holt House. Once that was completed the second step was to apply for a grant to prepare the scope of work forms and create architectural drawings for the repair projects. The staff is working with Mike Lovato, from LHB, Inc., an architectural firm with offices in Rochester, Minneapolis, and Duluth. Once his work is completed, the museum will apply for a third construction grant that will help pay for repairs such as new windows, tuck pointing and repair of the foundation and central chimney, and a new outside entry door and stairs to the basement, and paint.

Museums Coordinator, Janet Timmerman, asks the public for their patience in this process, "I know the outside of the building desperately needs of a coat of paint, but we don't want to do that before new windows, sills, and repair of the siding has happened. It will all come together in due time. The house is a precious structure and we want it done *correctly, not quickly.*"

Another grant in 2019 is slated to help End O Line Park assess the condition of the turntable. In the last two years, segments of the turntable have been underwater due to the excessive rain and flooding. The structure now ticks the side of the turntable pit stones, something that has never happened before. End O Line Site Supervisor, Jakob Etrheim, completed the successful grant application and says, "This condition report should be able to tell us whether the turntable itself is changing or if the pit stones are disintegrating due to the water. The historic architect should be able to offer solutions to the problem and help mitigate future issues as well."

The third grant was awarded to the county museum from an application submitted by Museum Site Supervisor, Rose Schmit. These funds will purchase a set of museum management publications to be housed at the museum. The small lending library includes 22 books that cover topics from how to care and display historic clothing to how to do oral histories with veterans. Other museums or interested persons can view and borrow books. Museum Site Coordinator, Rose Schmit says, "It is our hope that these books will help other museums or people with personal collections care for their artifacts the best way possible. Preserving Murray County's history is up to every one of us. The museum will have the list of books on the website soon."

These three grants, totaling \$39,596, enable important projects that otherwise would be hard to fund. The museums are evolving and changing to keep the collections and preservation of the history of Murray County in the forefront of their mission.



**Grant Recipient**  
MINNESOTA HISTORICAL  
& CULTURAL GRANTS

Made possible by the Arts and Cultural Heritage Fund through the vote of Minnesotans on November 4, 2008. Administered by the Minnesota Historical Society.

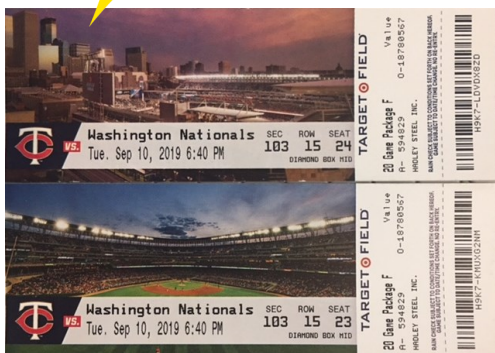




Buy a \$5 ticket for the

# RAFFLE

WIN



Two Twins vs Nationals tickets,  
September 10th!

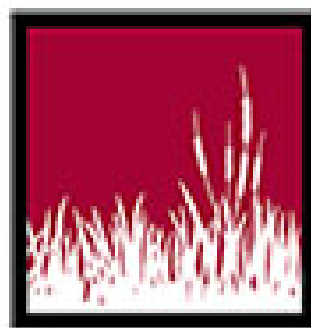


Two 2020 Season Tickets to the  
Hadley Buttermaker's games

WIN!



Handmade Cedar Bench, Cedar Serving  
Tray or Toolbox Garden Planter



Two gift baskets with \$25 Left Bank Café and  
Painted Prairie Winery gift certificates.

Be sure to thank our donors for their generous gifts:  
Hadley Buttermakers, Brian Harmsen, Hadley Steel



L-R: Rose Schmit, Marilyn and Murray Moore.

On the Genealogy Trail....

Throughout the year over 60 researchers cross our doorstep via phone, e-mail or, as in the case of Murray and Marilyn Moore, in person. They were searching for information on their ancestor Ada Peick. Rose knew just where to find that information, including the photo to the right, of Ada Peick and Flora Dinehart, as school mates.



Flora Dinehart and Ada Peick. The school is under construction.



Join us on the bus  
trip to see:

**Glensheen:  
The Musical!**

**At the Minnesota  
History Theater,  
St. Paul.**

**Sunday July 14.**

**Tickets \$100 includes bus trip, theater, and  
noon buffet at Dangerfield's in Shakopee  
Bus leaves from the Murray County Courts  
building parking lot at 8 AM**

**We have a few tickets left. Call soon!**

**Hours:**

**T-F 10-5 and S 10-2PM**

**Contact us:**

**507-836-6533**

**[museum@co.murray.mn.us](mailto:museum@co.murray.mn.us)**

**[historicmurraycounty.org](http://historicmurraycounty.org)**

**Find us on Facebook too!**

**MCHS Board Members:**

**Brian Harmsen**

**Linda Wing**

**Brad Bergerson**

**Christy Riley**

**Kyle Vos**

**Romane Dold**

**Rachel Dreeson**

**Ruth Hoyme**

**Dennis Anderson**

**County Commissioner  
representative: James Jens**

**Murray County Historical Society**

**PO Box 61**

**Slayton, MN 56172**